

MARKET SUMMARY

The Ghana Stock Exchange (GSE) experienced a decrease in trading during the week of February 9 – February 13, 2026. The exchange saw 34,069,327 shares traded, which was valued at GH¢139,417,109.86. This resulted in a 52.33% decrease in turnover from the previous week. The market capitalization currently stands at GH¢ 932,551.59million. During the week, eighteen stocks posted gains, and none recorded a price loss.

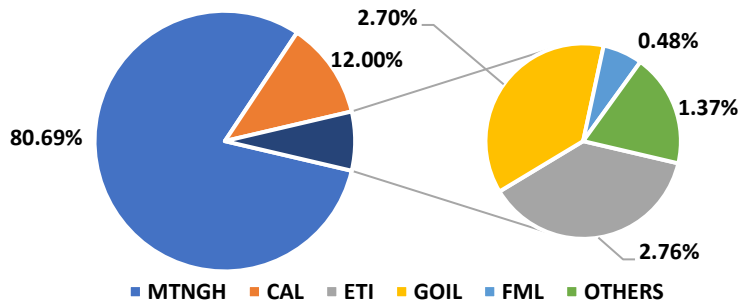
MTNGH led the top five equities with (27,490,462) shares traded, followed by CAL (4,088,416), ETI (939,338), GOIL (921,436), and FML (164,005).

EQUITY ON FOCUS:

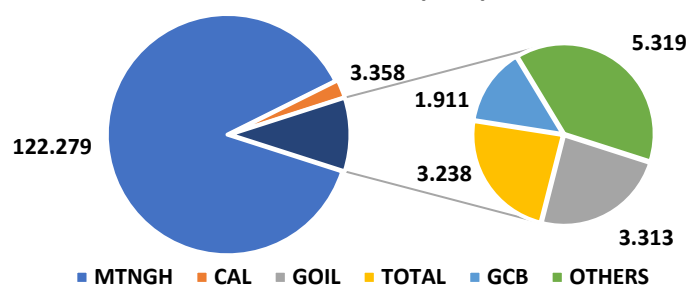
CLYDSTONE GHANA LIMITED (CLYD)

Clydestone Ghana is the 10th most traded stock on the Ghana Stock Exchange over the past three months (Nov 12, 2025 - Feb 13, 2026). CLYD has traded a total volume of 341,454 shares valued at GHS 171,044 over the period, with an average of 5,420 traded shares per session. A volume high of 324,000 was achieved on January 16th for the same period.

VOLUME TRADED(%)



VALUE TRADED(Mil.)



Stock Market	(13/02)	(06/02)	Change
GSE-COMPOSITE INDEX LEVEL	10,260.79	9,152.65	1,108.14pts
GSE-COMPOSITE INDEX LEVEL YTD (%)	17.00%	4.36%	-
GSE-FINANCIAL STOCKS INDEX	5,580.18	5,036.96	543.22pts
GSE-FINANCIAL STOCKS INDEX YTD (%)	20.08%	8.39%	-
GSE-COMP. INDEX MARKET CAP. (GH¢ mil)	932,551.59	899,631.32	3.66%
VOLUME TRADED	34,069,327	68,410,491	-50.20%
VALUE TRADED (GH¢)	139,417,109.86	292,481,484.17	-52.33%

MARKET MOVERS

GAINERS					LOSERS				
Equity	Week Open Price	Previous Week Price	Change	Change	Equity	Week Open	Prev. Week Close	Change	Change
BOPP	66.01	64.00	2.01	3.14%					
EGL	4.50	4.23	0.27	6.38%					
GCB	24.91	22.44	2.47	11.01%					
GOIL	3.60	3.20	0.40	12.50%					
RBGH	1.41	1.34	0.07	5.22%					
GGBL	8.45	8.39	0.06	0.72%					
ACCESS	21.52	17.80	3.72	20.90%					
SIC	1.70	1.37	0.33	24.09%					
SOGEGH	5.90	5.50	0.40	7.27%					
EGH	37.95	28.97	8.98	31.00%					
MTNGH	4.85	4.22	0.63	14.93%					
FML	9.76	8.20	1.56	19.02%					
CAL	0.86	0.80	0.06	7.50%					
CLYD	0.53	0.50	0.03	6.00%					
FAB	7.80	7.78	0.02	0.26%					
ETI	0.82	0.77	0.05	6.49%					
SCB	29.30	29.27	0.03	0.10%					
UNIL	21.76	19.79	1.97	9.95%					

Top Volume Traders	Current Mkt Price (GHS)	Volume
MTNGH	4.85	27,490,462
CAL	0.86	4,088,416
ETI	0.82	939,338
GOIL	3.60	921,436
FML	9.76	164,005

Top Value Traders	Current Mkt Price (GHS)	Value
MTNGH	4.85	122,278,721.33
CAL	0.86	3,357,566.28
GOIL	3.60	3,313,064.38
TOTAL	40.19	3,237,556.40
GCB	24.91	1,911,313.60

GSE INDEX PERFORMANCE. Analysing the performance of GSE market indices, the benchmark GSE Composite Index (GSE-CI) rose by 1,108.14 points, closing at 10,260.79 points, with a year-to-date gain of 17%. Also, the GSE Financial Stocks Index (GSE-FSI) surged by 543.22 points, closing at 5,580.18 points, with a year-to-date gain of 20.08%.

NIMED MUTUAL FUNDS

	Price	Ann. Yield
Nimed Fixed Income Tier 1	0.187	+10.92%
Nimed Fixed Income Tier 2	0.813	+5.97%
Nimed Life Time Unit Trust	0.285	+7.75%

UPDATE ON MARKET FOCUS – CLYD

Gainers	Change
Earnings Per Share	0.0643
Price-To-Earnings Ratio	8.24
Dividend Per Share	0.00
Dividend Yield	0%
Outstanding Share	34M
Market Capitalization	18M

BOG GOLD COIN PRICING

DENOMINATION	09/02/26 (GHC)	9/02/26(GHC)	Change
1.00 oz	56,537.97	55,934.17	1.08%
0.50 oz	28,615.09	28,312.92	1.07%
0.25 oz	14,676.11	14,524.73	1.04%

NB: LBMA PM price (previous day's close) = \$ 4,994.95, Bloomberg REGN USDGHS (previous day's close) = 10.9950.

Economic Outlook

Indicators	Week Open	Prev. Week Close	Change
INFLATION (%)	3.80%	5.40%	-1.60%pts
BOG POLICY RATE (%)	15.50%	18.00%	-2.50%pts
INTERBANK INTEREST RATE (%)	12.00%	15.30%	-3.30%pts

Ghana to become Africa's 8th biggest economy in 2026.

Ghana will become the eighth biggest economy in Africa in 2026, with a projected Gross Domestic Product (GDP) of US\$113.49 billion.

This will represent a moderate increase from its 2025 estimate of approximately \$108.1 billion, reflecting a projected GDP growth rate of 4.8%.

Using multilateral economic data, the growth trajectory demonstrates steady performance despite challenges in public debt management and external vulnerabilities.

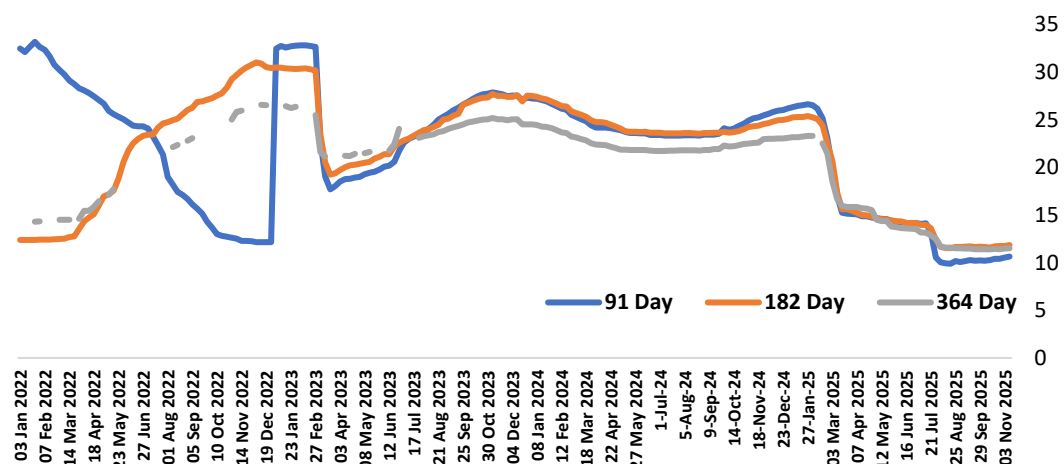
DISCLAIMER

This data is accurate from sources we believe are reliable for information purposes.

The Week's Highlight (13/02/26)

Currency	Buying	Selling	Mid-rate	Prev. Week's Midrate	Change	YTD Midrate
USDGHS	10.9930	11.0040	10.9985	10.9800	0.17%	4.75%
GBPGHS	14.9945	15.0106	15.0026	14.9367	0.44%	5.91%
EURGHS	13.0375	13.0504	13.0440	12.9726	0.55%	5.78%
GHSXOF	50.2634	50.3131	50.2883	50.5648	-0.55%	-5.46%
CHFGHS	14.2397	14.2523	14.2460	14.1513	0.67%	7.33%

T-Bill	Week Open		Prev. Week		Change	
	Discount	Interest	Discount	Interest	Discount	Interest
91 Day Bill	9.7272	9.9696	10.8920	11.1969	-10.69%	-10.96%
182 Day Bill	11.1573	11.8165	11.9113	12.6656	-6.33%	0.14%
364 Day Bill	10.7639	12.0623	11.5553	13.0650	-6.85%	0.65%



Source: Nimed Research, Ghana Stock Exchange, Doobia, GSS, Bloomberg.

Analyst

ZIKPI EDEM LAWRENCE

lawrence.zikpi@nimedcapital.com