

MARKET SUMMARY

The Ghana Stock Exchange (GSE) experienced an increase in trading during the week of May 11 – May 15, 2026. The exchange saw 5,282,168 shares traded, which was valued at GH¢28,010,160.00. This resulted in a 67.92% decrease in turnover from the previous week. The market capitalization currently stands at GH¢ 264,808.19 million. During the week, 6 stocks posted gains, and 11 losers.

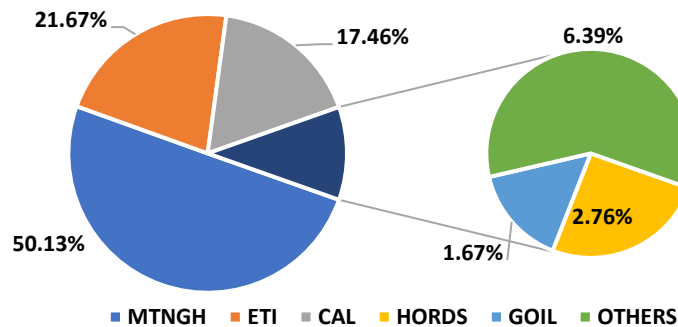
MTNGH led the top five equities with (2,647,995) shares traded, followed by ETI (1,144,674), CAL (922,117), HORDS (146,045), and GOIL (88,178).

EQUITY ON FOCUS:

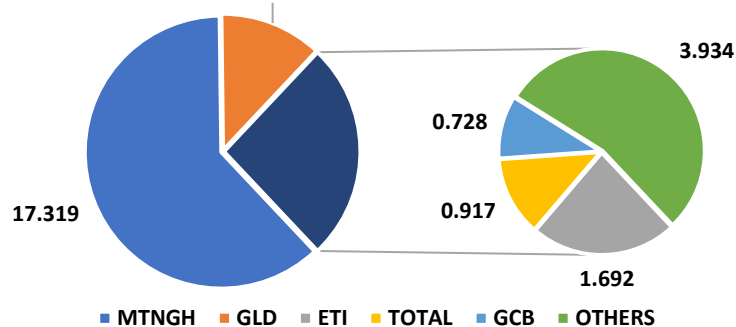
Atlantic Lithium Ltd (ALLGH)

Atlantic Lithium is the 17th most traded stock on the Ghana Stock Exchange over the past three months (Feb 10 - May 15, 2026). ALLGH has traded a total volume of 294,664 shares valued at GHS 2.18 million over the period, averaging a volume of 4,677 shares (valued at GHS 34,604) per session. A volume high of 52,785 was achieved on April 30th for the same period.

VOLUME TRADED(%)



VALUE TRADED(Mil.)



Stock Market	(15/05)	(08/05)	Change
GSE-COMPOSITE INDEX LEVEL	14,320.45	14,567.57	-247.12pts
GSE-COMPOSITE INDEX LEVEL YTD (%)	63.28%	66.10%	-
GSE-FINANCIAL STOCKS INDEX	8,068.95	8,312.72	-243.77pts
GSE-FINANCIAL STOCKS INDEX YTD (%)	73.63%	78.88%	-
GSE-COMP. INDEX MARKET CAP. (GH¢ mil)	264,808.19	278,983.86	-5.08%
VOLUME TRADED	5,282,168	13,553,818	-61.03%
VALUE TRADED (GH¢)	28,010,160.00	87,326,101.00	-67.92%

MARKET MOVERS

GAINERS					LOSERS				
Equity	Week Open Price (18/5/26)	Prev. Week Price (11/5/26)	Change	% Change	Equity	Week Open	Prev. Week Close	Change	Change
IIL	0.07	0.05	0.02	40.00%	GLD	497.00	497.01	-0.01	-0.002%
CLYD	1.97	1.64	0.33	20.12%	GOIL	7.94	7.96	-0.02	-0.25%
HORDS	0.11	0.1	0.01	10.00%	RBGH	5.50	5.53	-0.03	-0.54%
ALLGH	8.46	7.80	0.66	8.46%	MTNGH	6.49	6.53	-0.04	-0.61%
ZEN	7.55	7.36	0.19	2.58%	SIC	5.77	6.01	-0.24	-3.99%
SOGEH	6.46	6.39	0.07	1.10%	FML	13.34	13.93	-0.59	-4.24%
					CAL	0.77	0.81	-0.04	-4.94%
					ETI	1.52	1.60	-0.08	-5.00%
					TOTAL	33.00	36.49	-3.49	-9.56%
					ACCESS	27.60	30.60	-3.00	-9.80%
					GCB	36.00	40.00	-4.00	-10.00%

Top Volume Traders

Top Volume Traders	Week open Mkt Price (GHS)	Volume
MTNGH	6.49	2,647,995
ETI	1.52	1,144,674
CAL	0.77	922,117
HORDS	0.11	146,045
GOIL	7.94	88,178

Top Value Traders

Top Value Traders	Week open Mkt Price (GHS)	Value
MTNGH	6.49	17,318,501.07
GLD	497.00	3,420,863.56
ETI	1.52	1,692,465.79
TOTAL	33.00	917,216.81
GCB	36.00	727,527.20

GSE INDEX PERFORMANCE: Analysing the performance of GSE market indices, the benchmark GSE Composite Index (GSE-CI) decreased by 247.12 points, closing at 14,320.45 points, with a year-to-date gain of 63.28%. Moreover, the GSE Financial Stocks Index (GSE-FSI) decreased by 244.77 points, closing at 8,068.95 points, with a year-to-date gain of 73.63%.

NIMED MUTUAL FUNDS

	Price	Ann. Yield
Nimed Fixed Income Tier 1	0.191	+10.50%
Nimed Fixed Income Tier 2	0.860	+17.72%
Nimed Life Time Unit Trust	0.291	+8.47%

UPDATE ON MARKET FOCUS – CLYD

Gainers	Change
Earnings Per Share	0.00
Price-To-Earnings Ratio	0.00
Dividend Per Share	n. a
Dividend Yield	n. a
Outstanding Share	693M
Market Capitalization	5.86B

BOG GOLD COIN PRICING

DENOMINATION	18/05/26 (GHC)	11/05/26 (GHC)	Change
1.00 oz	53,559.65	55,293.25	-3.14%
0.50 oz	27,134.18	27,998.64	-3.09%
0.25 oz	13,944.66	14,374.24	-2.99%

NB: LBMA PM price (previous day's close) = \$ 4,741.40. Bloomberg REGN USDGHS (previous day's close) = 11.2800

Economic Outlook

Indicators	Week Open	Prev. Week Close	Change
INFLATION (%)	3.40%	3.40%	0.00%pts
BOG POLICY RATE (%)	14.00%	14.00%	0.00%pts
INTERBANK INTEREST RATE (%)	10.26%	10.29%	0.03%pts

MPC opens 130th meeting to review Ghana's economy.

The Bank of Ghana has begun its 130th Monetary Policy Committee meeting to assess the economy and decide on the policy rate, currently at 14%. Governor Johnson Pandit Asiamah urged the committee to focus on policies that support business credit expansion while maintaining low inflation.

He warned that Ghana faces several economic risks, including prolonged Middle East tensions, rising energy prices, domestic power supply challenges, and external commodity pressures, all of which could threaten inflation stability and economic growth. The Governor emphasized the need for a stronger banking sector to support lending and sustain the country's economic recovery.

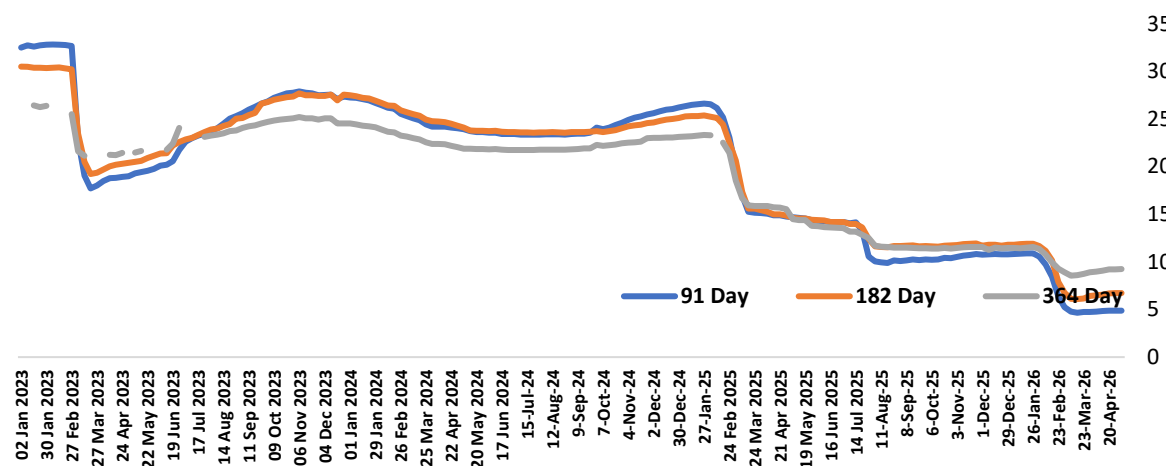
DISCLAIMER

This data is accurate from sources we believe are reliable for information purposes.

The Week's Highlight (15/05/26)

Currency	Buying	Selling	Midrate	Prev. Week's Midrate	Change	YTD Midrate
USDGHS	11.4068	11.4182	11.4125	11.2750	1.22%	8.69%
GBPGHS	15.1973	15.2136	15.2055	15.3639	-1.03%	7.35%
EURGHS	13.2635	13.2754	13.2695	13.2774	-0.06%	7.61%
GHSXOF	49.4115	49.4558	49.4337	49.4043	0.06%	-7.07%
CHFGHS	14.4984	14.5127	14.5056	14.5100	-0.03%	9.28%

T-Bill	Week Open		Prev. Week		Change	
	Discount	Interest	Discount	Interest	Discount	Interest
91 Day Bill	4.8577	4.9174	4.8243	4.8832	0.69%	0.70%
182 Day Bill	6.8017	7.0412	6.7991	7.0384	0.04%	0.04%
364 Day Bill	9.4086	10.3858	9.1984	10.1302	2.29%	2.52%



Source: Nimed Research, Ghana Stock Exchange, Doobia, GSS, Bloomberg.

Analyst

ZIKPI EDEM LAWRENCE

lawrence.zikpi@nimedcapital.com